

BEFORE YOU RIDE CHECKLIST

EDUCATION

Complete the required Utah OHV education course:

- ☐ Adult certificate: for those 18 years or older
- ☐ Youth certificate: for those under 18

Be familiar with:

- ☐ Local rules and regulations governing those trails
- ☐ Open and accessible OHV trails you intend to ride

EQUIPMENT REQUIREMENTS

Your vehicle must have:

- ☐ Lights if driving between sunset and sunrise
- ☐ Muffler with a spark arrestor (except snowmobiles)
- ☐ Brakes

DOT-approved helmets:

- ☐ Required for certain ages and vehicle types
- ☐ Helmets must be properly fitted and fastened

Also required:

- ☐ Ensure that you can reach and operate all controls necessary to safely operate the OHV
- ☐ If riding on sand dunes, attach a red or orange whip flag to your vehicle

RESIDENTS

- ☐ Register your vehicle annually with the Utah Division of Motor Vehicles (UDMV)

The UDMV will issue:

- ☐ One-time off-highway vehicle license plate (except OHMs and snowmobiles)
- ☐ A registration decal
- ☐ A registration card. Must always be kept with OHV and available for inspection by law enforcement

NON-RESIDENTS

- ☐ Non-residents must obtain a Non-Resident OHV Permit (valid for one year)

T-CLOC PRE-RIDE SAFETY CHECKLIST

- ☐ (T) Tires
- ☐ (C) Controls and cables
- ☐ (L) Lights and electrics
- ☐ (O) Oil and fuel
- ☐ (C) Chain/driveshaft and chassis

ALWAYS REMEMBER

- ☐ Tell a responsible person about your travel plans, including when you expect to return.
- ☐ Never ride alone. It's safer with others and more fun. Consider riding with a club or other group.
- ☐ Be alert to oncoming traffic, especially on blind curves or in dips and crests of hills.

**Cellphones cannot be relied upon to function outside of metropolitan areas.*

***Carry necessary prescription medications in the event of an extended outing.*



Where to ride

UTAH OFF-HIGHWAY VEHICLE LAWS AND RULES





TABLE OF CONTENTS

INTRODUCTION.....	2
DEFINITIONS.....	3
FUNDS.....	6
OUR TRAIL CREW.....	7
OUR SNOW GROOMING PROGRAM.....	8
GRADED ROADS.....	8
LAWS	9
NON-RESIDENT PERMITS	12
EDUCATION.....	13
SAFETY.....	14
PUBLIC LAND.....	17
CONTACT US.....	18



INTRODUCTION

2

The Off-Highway Vehicle (OHV) Program supports the policy of this state to promote safety and protection for persons, property, and the environment connected with the use, operation, and equipment of OHVs, to promote uniformity of laws, to adopt and pursue a safety education program, and to develop trails and other facilities for the use of these vehicles.

This program is funded by in-state resident and out-of-state non-resident OHV registration dollars.

Utah takes great pride in its extensive OHV trail system, spanning over 80,000 miles and covering various trail networks throughout

the state. This remarkable achievement is made possible through collaborating with city, county, non-profit, state, tribal, and federal partners. Among these vast trails, approximately 1,200 miles are annually groomed during the winter, forming Utah's 13 snowmobile complexes.

DEFINITIONS

Understanding the terms and definitions related to **Off-Highway Vehicles (OHVs)** is essential for identifying the type of machine you have and the regulations you must follow in Utah. The lack of industry-wide standards often leads to confusion among users regarding vehicle classifications.

An Off-Highway Vehicle (OHV) is a broad category encompassing any vehicle designed for off-road travel. Adding to the complexity, terms like ROV (Recreational Off-Highway Vehicle) are often used to describe any OHV intended for recreational purposes.

ATVs (All-Terrain Vehicles) are often associated with being "four-wheelers," and "quads," though the term is broader under Utah's legal definitions.

On the other hand, *Utility Terrain Vehicles (UTVs)* are typically work-focused, less rider-active, and have unique safety considerations due to their different center of gravity compared to four-wheelers.

Side-by-Sides (SxS) are a type of UTV specifically designed for recreation, further blurring the lines between these vehicles.

Off-Highway Vehicle (OHV) - Any snowmobile, all-terrain type I vehicle, all-terrain type II vehicle, all-terrain type III vehicle, or motorcycle.

All-Terrain Type I Vehicle (Type I ATV) - Any motor vehicle 52 inches or less in width, having an unladen dry weight of 1,500 pounds or less, traveling on three or more low-pressure tires, having a seat designed to be straddled by the operator, and designed for or capable of travel over unimproved terrain.

All-Terrain Type II Vehicle (Type II ATV) -
Any motor vehicle 80 inches or less in width, traveling on four or more low-pressure tires, having a steering wheel, non-straddle seating, a rollover protection system, and designed for or capable of travel over unimproved terrain, and is:

- (i) an electric-powered vehicle; or
- (ii) a vehicle powered by an internal combustion engine and has an unladen dry weight of 3,500 pounds or less.

All-Terrain Type III Vehicle (Type III ATV) -
Any motor vehicle, not defined as a Type I ATV, Type II ATV, or a snowmobile, designed for or capable of travel over unimproved terrain.

Snowmobile - Any motor vehicle designed for travel on snow or ice and steered and supported in whole or in part by skis, belts,

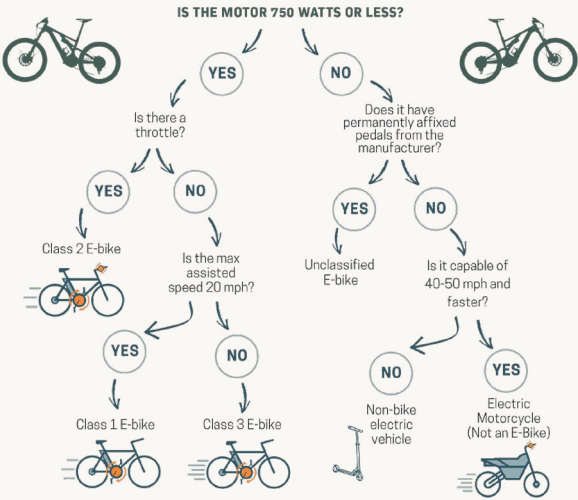
cleats, runners, or low-pressure tires, and equipped with a saddle or seat for the use of the rider.

Street-Legal All-Terrain Vehicle or Street-Legal ATV - An all-terrain type I vehicle, all-terrain type II vehicle, or all-terrain type III vehicle, that is modified to meet the requirements listed under the street-legal section.

Off-Highway Motorcycle (OHM) - Every motor vehicle with a saddle for the use of the operator and is designed to travel on no more than two tires.

Some electric bikes (E-Bikes) are considered OHMs, review our website at recreation.utah.gov/off-highway-vehicles/education/ohv-laws-and-rules/

IS IT AN E-BIKE?



WHERE CAN YOU RIDE?

Always check regulations as rules can change between local, state, and federal agencies.

LOCAL: Consult your local land management agency. Class 1 E-bikes are most likely to be allowed on non-motorized trails.

STATE: Utah State Parks allows E-bikes on non-motorized trails open for bikes.

FEDERAL: On federal lands, E-bikes are considered motorized vehicles and have access to motorized trails.

[illegible]

A black and white photograph of a modified Volkswagen Beetle. The car is equipped with large, knobby off-road tires and a roof rack. It appears to be a custom build, possibly for off-road use or as a show car. The car is shown from a front-three-quarter view.

6

- Dune Buggies
- Moab "Rock Crawlers"
- Lifted/Modified Full-Size Vehicles

FUNDS

Funds from Utah and non-resident OHV permits are directly reinvested into Utah's OHV recreation program. These funds support trail

construction, maintenance, and improvements, as well as OHV education, facility development, and enforcement efforts.

Utah's OHV program implements the following in-state registration fees. Any additional fees are outside of the OHV program.

- OHV resident registration (type I, II, and III): **up to \$35**
- Snowmobile registration: **up to \$26**
- Street-legal ATV registration: **up to \$72**
- Non-resident permit fee: **\$30 (plus processing fees)**

The funding helps support Utah's OHV Program.

7

OUR TRAIL CREW

Our Trails and Planning program works to protect and improve trail access for both locals and visitors to enjoy Utah's natural beauty. We collaborate with federal, state, and local agencies, along with non-profits to develop and maintain trails across the state. This is



made possible by our four trail crews, located throughout the state, who help ensure these trails remain sustainable and accessible for the long term.

OUR SNOW GROOMING PROGRAM

Our OHV program also supports snowmobile grooming operations across Utah. We manage the grooming of 13 snowmobile complexes to ensure the trails are safe, accessible, and enjoyable throughout the winter season, helping maintain Utah's reputation as a top destination for snowmobiling.



GRADED ROADS

A graded road is typically a maintained dirt or gravel road that has been improved for use by various types of vehicles. By driving responsibly, you help reduce road damage, save taxpayer money, and ensure a safer ride for everyone. Stay on your side of the road, slow down when passing, avoid hard acceleration or braking, and stay off muddy

9



9

9

9



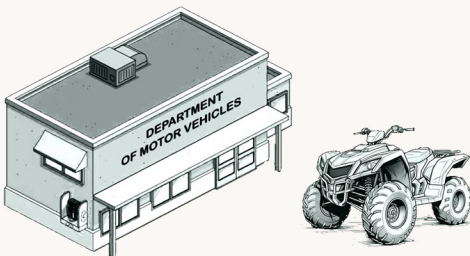
9

In-State Registration

Any OHV operated or placed on public land, trail, street, or highway in the state of Utah **must display a current OHV registration sticker**, placed on the required DMV-issued license plate.



Registration of all OHVs in Utah is managed by the DMV. OHV registrations expire annually on the last day of the month the OHV was purchased.



OHVs used on farms and ranches - or other agricultural purposes - may be registered as implements of husbandry. However, if the OHV is used for recreation on public lands, roads, or trails, it must also be registered for that purpose.

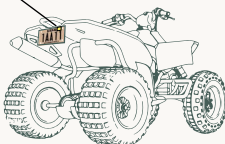
All OHVs (excluding street-legal OHVs, OHMs, and snowmobiles) must display an OHV license plate. These license plates feature a unique five-digit number and a tan background with

[illegible]

 Министарство просвете, nauke i tehnologije Republike Srbije



combined monthly & yearly
decals applied to the upper
right-hand corner of OHV-
specific rear license plate.

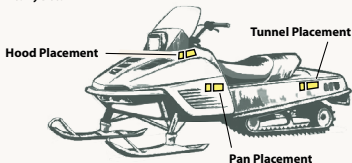


(Off-Highway Motorcycles)

A line drawing of a motorcycle from a side profile. Two labels with arrows point to specific locations on the bike. The label 'Fork Placement' has an arrow pointing to the front fork assembly. The label 'Radiator Shroud Placement' has an arrow pointing to the radiator area on the engine.



Monthly decal applied in front of yearly decal. Placed on the left side of the pan, tunnel, or hood.



NON-RESIDENT PERMITS & REQUIREMENTS

Registration/Permits

Any non-residents operating an OHV on any public land, trail, street, or highway in the state of Utah must obtain a non-resident permit. Non-residents must provide evidence that the owner is a non-resident, and provide proof of completion of the required OHV Education Course (*see education section on page 13*). This course is free of charge.

The cost of a non-resident **OHV permit is \$30**, and it is valid for 12 months from the date of purchase. You can purchase a permit online at ohv.utah.gov (additional processing fees are added to all online sales) or at the [Natural Resources Map & Bookstore](#) located in Salt Lake City.

Non-Resident Street-Legal Requirements

The Division recognizes non-resident vehicles as street-legal in Utah if they meet the following criteria:

- They comply with Utah's required street-legal equipment standards (*see street-legal section on page 15*).
- They are registered for highway use.
- The state where the vehicle is registered offers reciprocal operating privileges to Utah residents.

If a machine meets these three requirements, its owner is not required to purchase a Utah non-resident OHV permit.

EDUCATION

Utah requires all OHV operators, including unguided OHV rentals, to complete a [Utah OHV Education Course](#). However, for guided rentals, completion of the course is not required.

The OHV certification covers, ATVs, OHMs, and ATVs (type II ATVs or UTVs). The snowmobile education certificate covers only snowmobiles and is required for operators younger than 16 years old.

Adult Requirements (18+)

Adult operators, 18 years of age or older, must possess an approved Utah Off-Highway Vehicle Education Course certificate. This requirement does not apply:

- When operating a snowmobile.
- When operating an off-highway implement of husbandry.
- When participating in a guided tour or sanctioned OHV event.

Youth Requirements (Under 18)

Operators under the age of 18 must possess a youth OHV education certificate in order to operate an OHV on public land or trails.

To help ensure the safety of all riders, Utah law allows individuals under 18 or those without a valid driver's license to operate an OHV on public land if they meet the following requirements:

- Can reach and operate each control necessary to safely operate the OHV.
- Have in their possession an OHV education certificate.
- Are under direct adult supervision.

There are two ways for youth under 18 to obtain their OHV education certification: they can either pay for the [online course](#) or participate in one of our free, hands-on courses. **We do not reciprocate education courses with other states.** For more information, please visit our website at [ohv.utah.gov](#).

Students aged 16 to 17 with a valid driver's license can ride without adult supervision. However, they are still required to complete the youth course for individuals under 18.

SAFETY

Helmet Requirements

A helmet is the most important piece of safety gear available. **Helmets are required for OHV operators and passengers under 18 years old** who are riding Type I ATVs, OHMs, or snowmobiles.

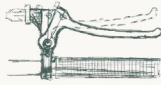
These helmets must be properly fitted, fastened, and have at least a "DOT Approved" safety rating for motorized use. We strongly encourage everyone to wear a helmet, even when it is not required.

Equipment Requirements

In Utah, we have specific equipment requirements to make sure that every OHV is in good working order. These include:

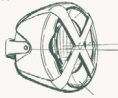
Brakes

Must be able to control, stop, and hold the vehicle under normal conditions.



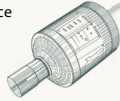
Lights

Headlights and tail lights are required when operating between sunset and sunrise.



Noise & Spark Arrestor

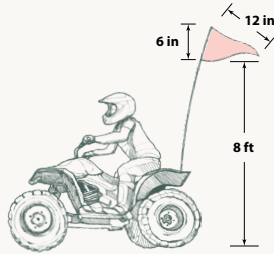
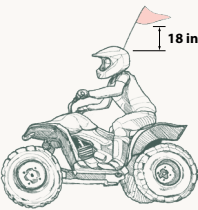
The vehicle must have a noise control device and, except for snowmobiles, a spark arrestor



Whip Flag

When operating on sand dunes designated by the division, the vehicle must have a safety flag that is:

- Red or orange
- At least 6 by 12 inches
- Mounted so that it is at least 8 feet above the ground on the vehicle, or at least 18 inches above the operator's head if attached to their helmet



Street-Legal OHVs

Type I, Type II, and Type III ATVs may be modified to become street-legal and operate on designated public highways.

For **ATV I vehicles** operated as street-legal ATVs, the owner must ensure the vehicle is equipped with:

- Headlamps, tail lamps, and a lamp illuminating the registration plate.
- Rear red reflectors and stop lamps.



- Amber or red turn signals (front and rear).
- Braking system, horn, and muffler that meet specific requirements.
- Rearview mirrors, windshield (or eye protection), and illuminated speedometer.
- Passenger seat (if designed for passengers).
- Tires that meet size and tread specifications.

For **ATV II and III vehicles** operated as street-legal ATVs, the owner must ensure the vehicle is equipped with:

- Two headlamps, two tail lamps, and a lamp for the registration plate.
- Rear red reflectors and two stop lamps.
- Amber or red turn signals (front and rear).
- Braking system, horn, and muffler that meet specific requirements.
- Rearview mirrors, windshield (or eye protection), and illuminated speedometer.
- Passenger seat, seat belts (for side-by-side/tandem seating), and seat height between 20-40 inches.
- Tires that do not exceed 44 inches in height and have at least 2/32 inches of tread.

[illegible]

A person cannot drive a street-legal OHV on a highway in certain situations. First, street-legal OHVs are not allowed on interstate highways. Second, in counties with a large population



(first-class counties), OHVs cannot be driven on highways near grade-separated sections if the speed limit is over 50 miles per hour.

If someone is driving a street-legal OHV on a highway with a speed limit higher than 50 miles per hour, they must drive on the far-right side of the road and make sure the OHV has reflectors or reflective tape on the front and back of both sides of the vehicle.

PUBLIC LAND

Registered OHVs may be operated on public land, trails, streets, or highways that are posted by sign or designated by map or description as open to OHV use by the controlling federal, state, county, or municipal agency.

Tip: popular mapping apps like [Gaia](#) and [OnX](#) offer public land map overlays that eliminate much of the guesswork when deciding where to ride.

A person may not operate an OHV on any street or highway not designated as open to OHV use, except in the following circumstances:

- When crossing a street or highway.
- When loading or unloading an OHV from a vehicle or trailer.
- When an emergency exists, or as directed by a peace officer or other public authority
- When operating a street-legal OHV.

A person cannot operate an OHV cross-country on public land unless the controlling agency has designated it for that use. Cross-country means traveling across natural terrain, away from existing highways, roads, routes, or trails.



A person cannot operate a wheeled vehicle weighing 800 pounds or more on any snowmobile trail marked, posted, designated, or maintained by the division.

For each in-state registration fee, a portion goes to the Utah Division of Motor Vehicles (UDMV), the Utah School and Institutional Trust Lands Administration (SITLA), Land Grant Management Fund, the Utah Highway Patrol Aero Bureau, and search and rescue. The rest of the funds directly support Utah's OHV Program.

For non-resident registration fees, a share is allocated to SITLA, the Land Grant Management Fund, and the seller keeps a small percentage of the fee collected.

CONTACT US

(801) 538-RIDE | ohveducation@utah.gov

1594 W North Temple
PO Box 146001
Salt Lake City, UT 84114-6001